



Please Leave This Copy For The Next Guest To Enjoy



Please Leave This Copy For The Next Guest To Enjoy





Phuket

Phuket offers the richest selection of boating destinations found anywhere. From the limestone cliffs of Krabi, Phi Phi, and Phang Nga Bay, to beautiful isolated stretches of beaches on Phuket's West Coast.

Whatever your choice – snorkeling, sunning, or just plain relaxing – Limestone Adventures Cruises will get you there with speed, style, and in safety and comfort.

Koh Hong Krabi & Phang Nga Bay

- See Phang Nga Bay and Krabi in the same day
- Snorkeling at Koh Hong Krabi
- Sightseeing at James Bond Island and Sea Gypsy Village
- Good sea conditions year-round
- Private beaches
- Great for families

Koh Hong Krabi is one of Phuket's best kept secrets - the perfect choice for avoiding crowds. This cruise combines activities such as snorkeling at Koh Hong Krabi with great sightseeing in Phang Nga Bay. Relatively protected waters make this a great cruise option for families.

Sample Itinerary

9:30 am	depart pier
10:15 am	arrive Koh Hong Krabi area snorkel & sun at Koh Hong Krabi, Koh Pak Bia, Paradise Beach, or the deserted island spit of Koh Nok
12:30 pm	beach picnic
1:30 pm	depart Koh Hong Krabi area
1:50 pm	arrive Koh Panyi gentle cruise through mangrove forests, explore limestone caves
3:30 pm	depart Koh Panyi
3:45 pm	arrive Koh Hong Phang Nga area cruise through a lagoon, past the massive cliffs of Koh Panak, climb ashore, walk through a cave, and discover a magical inland lake
5:30 pm	arrive pier



Round Island

- Visit exquisite west coast “hidden” beaches including Mai Khao, Freedom, Laem Singh and Nui beaches
- Lounge on a perfect white sand beach at Koh Naka, in the shadows of Phang Nga Bay
- Snorkel with tropical fish at Coral Island

Join us for a Round Island experience, and you'll see all that Phuket has to offer. From snorkeling at Coral Island on Phuket's East Coast, to Phang Nga Bay, and the west coast's pristine beaches, you'll see it all.

Sample Itinerary

9:30 am	depart pier
10:00 am	arrive Koh Naka, get wet with your first swim of the day on a quiet beach
10:45 am	depart Koh Naka, cruise past Phang Nga Bay, under Sarasin Bridge, and past the isolated stretches of Mai Khao beach
11:15 am	arrive Banana Rock Beach, sun and swim at this quiet, beautiful beach, snorkel at Koh Waeo, simply the best spot on Phuket's west coast
12:45 pm	lunch at Leam Singh Beach, favoured by locals, not least because of Ali's perfect al dente seafood pasta and fresh espresso roast, served to you under a thatch roof, with sand under your feet
2:45 pm	depart Laem Singh Beach, cruise past the cliffhanging mansions of the Kamala Headland, cruise past Patong and spot the superyachts parked in the bay, a quick swim at Freedom Beach, or perhaps Nui Beach – both of them great, and hard to reach by foot
5:30 pm	arrive pier



Join Us For A Round Island Experience

Phang Nga Bay

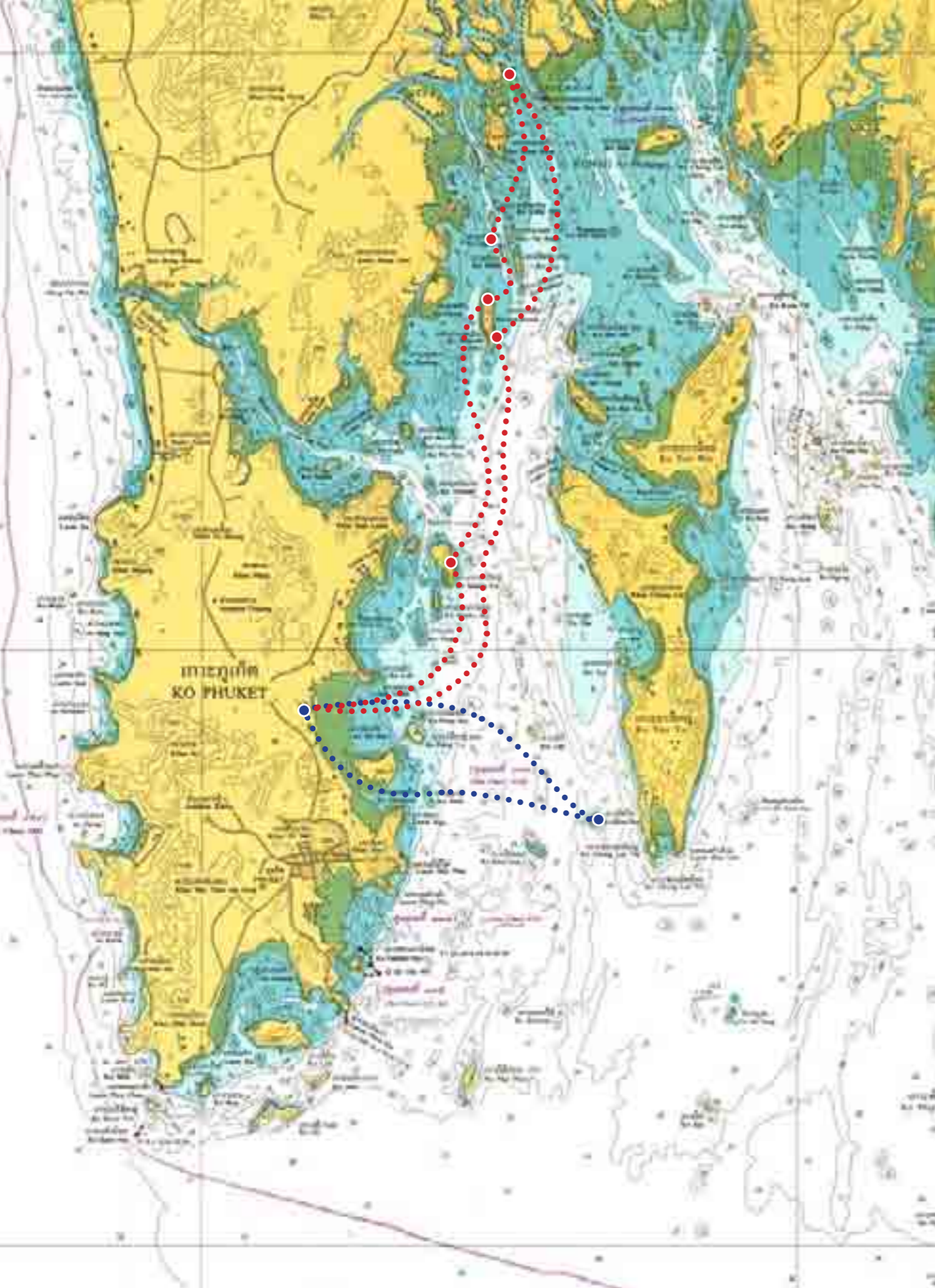
- Limestone cliffs towering from the sea
- Cruise the jade green lagoon of Koh Hong Phang Nga. Visit the nearby home of Scaramanga at James Bond Island.
- Dip your toes into the perfect white sands of Koh Naka.

Be amazed by the spectacular limestone scenery of Phang Nga Bay. Reaching deep into the sheltered northern reaches of Phang Nga Bay, it is an excellent choice any time of year, and particularly during the June-October periods when waters elsewhere can be relatively rougher.

Lunch is served picnic style on a secluded beach, or at a seafood restaurant in the sea gypsy village.

Sample Itinerary

9:00 am	depart pier
9:40 am	arrive Koh Hong Phang Nga area, cruise past Ko Panak, through a lagoon, and past James Bond Island
11:00 am	arrive Koh Panyi cave & Sea Gypsy Village
11:45 am	beach picnic at Koh Naka
12:45 pm	depart Koh Naka
1:00 pm	return to pier



Koh Khai Twilight Escape

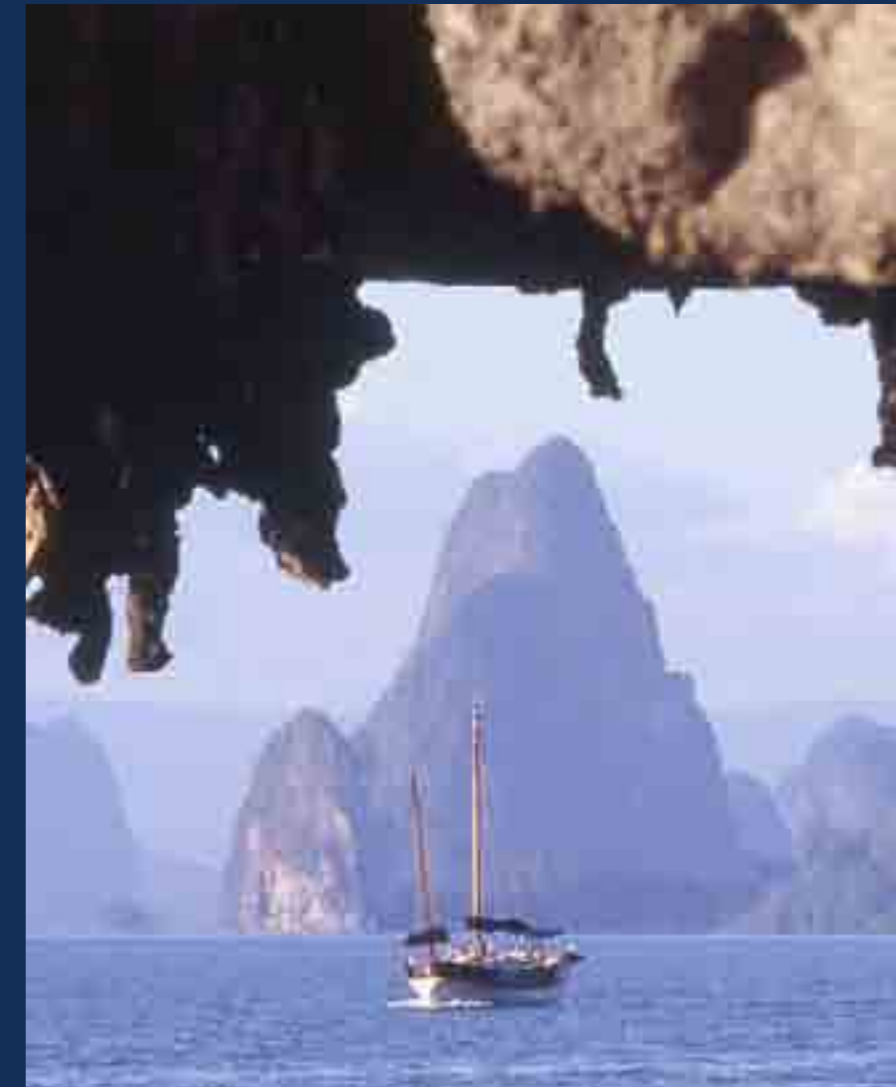
- Sleep late, and don't worry about missing the boat!
- A fantastic spot for snorkeling enthusiasts and sun seekers alike.
- Cruise the relatively protected waters of Phuket's east coast.
- Enjoy absolutely fresh seafood at the floating restaurants of Laem Hin.

This afternoon cruise is a perfect half day spent on a deserted tropical island. Sleep late and don't worry about missing the boat. Enjoy a day in the islands, without making a full day of it.

Koh Khai is a rocky outcrop with beautiful sand, vibrant coral, and teeming tropical fish. With views towards Koh Yao Noi, Phi Phi, and back to Phuket, it's a true story book Robin Crusoe Island.

Sample Itinerary

3:30 pm	depart Pier
4:00 pm	arrive Koh Khai. Snorkelling, sunning, and swimming, followed by picnic lunch
5:30 pm	depart Koh Khai
6:00 pm	arrive Laem Hin floating seafood restaurants
7:30 pm	depart Laem Hin Pier and 5-minute transfer to shore via. local longtail



Railay Beach

- Beat the rising tide and soak in the sun on the sandbar at Chicken Island.
- Perfect white sand beaches ringed by limestone giants.
- Great for snorkeling or sunning.
- 3 hours by car or 1 hour by boat!

Just because you're staying in Phuket doesn't mean you need to miss spectacular Krabi and Railay Beach! Limestone Adventures brings you there straight from Phuket in 1 hour!

As you approach from the west, you'll be amazed by Krabi's towering limestone cliffs, which rise above a sliver of white sand beach.

Enjoy a lazy day sunning on a once-in-a-lifetime white sand beach. Dip into the shade as we tie up the boat under the eaves of a limestone giant. Visit the famous sandbar of Chicken Island, sun, and snorkel. Whatever your choice, you won't soon forget your day in Krabi with Limestone Adventures.

Sample Itinerary

9:30 am	depart pier
10:45 am	arrive Railay Beach, sunning, swimming, and lunch
1:30 pm	depart Railay Beach
1:40 pm	arrive Chicken Island, snorkelling, sunning, and swimming
4:15 pm	depart Chicken Island, stop for a quick last swim at Koh Nok or Koh Naka
5:30 pm	arrive pier



Phi Phi

- Snorkel with tropical fish at Nui Bay, Monkey Bay, and Koh Khai.
- Cruise the jade green waters of Hong Piley lagoon.
- Work your tan at Maya Bay – the perfect beach.

Phi Phi – a sight once seen, and never forgotten. Whether your interest is relaxing on a beautiful beach, or getting active with a snorkel and fins, Phi Phi has something to offer you.

At Phi Phi Don, we'll take you to Monkey Bay and Nui Bay – both terrific spots for sand and snorkeling. On Phi Phi Ley, you'll visit Maya Bay, famous from the movie *The Beach*, and the spectacular Hong Pileh. With its sandy bottom, this jade green lagoon is nature's perfect swimming pool.

Sample Itinerary

9:30 am	depart pier
11:00 am	arrive Phi Phi Don, snorkel at Nui Bay or Monkey Bay
12:30 pm	beach picnic
2:15 pm	arrive Phi Phi Le, swim, snorkel and sun at Maya Bay, cruise the jade green waters of the lagoon and swim in Mother Nature's perfect pool
3:45 pm	depart Phi Phi Le
4:30 pm	arrive Koh Khai or Coral Island, snorkel and enjoy a beautiful deserted island, after the crowds have fled
5:00 pm	depart to pier
5:30 pm	arrive pier



Once Seen, Never Forgotten

Koh Hong Krabi

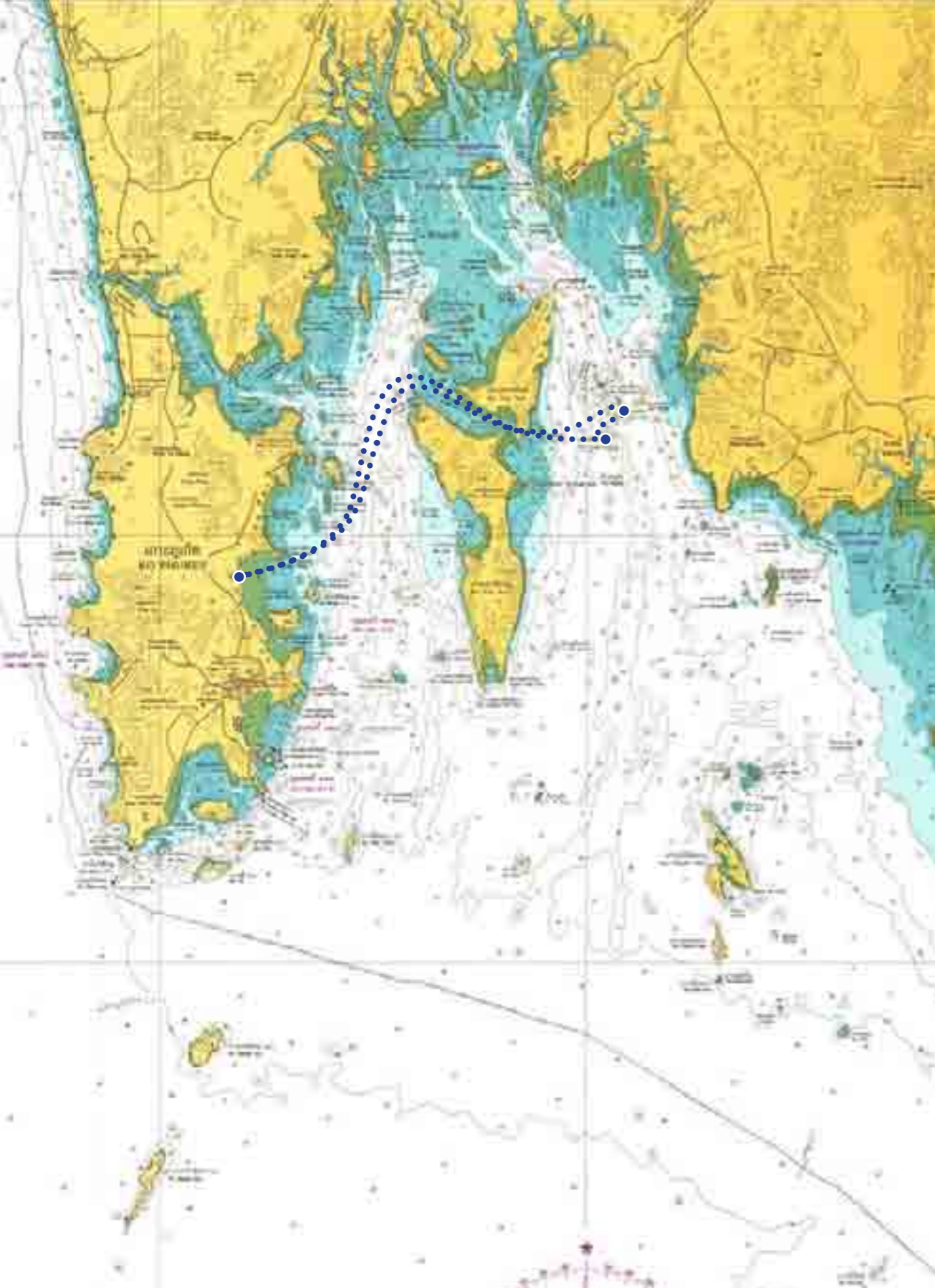
- Our most popular cruise
- Sheltered waters - perfect year-round destination and great for families
- Cruise the jade green waters of the lagoon at Ko Hong Krabi. Snorkel with tropical fish at Koh Hong Krabi National Park
- Dip your toes into the perfect white sands of Koh Naka

Koh Hong Krabi is our most popular cruise. Relatively protected waters make it a good destination all year round, and perfect for families. Just 40 minutes from Boat Lagoon, your trip will take you past the limestone wonders of Phang Nga Bay, to the Ko Hong Krabi Archipelago, with its many deserted island beaches.

Koh Hong Krabi is, simply, Phuket's best kept secret!

Sample Itinerary

9:30 am	depart from pier
10:15 am	arrive Koh Hong Krabi Archipelago. Swim, sun and snorkeling at Koh Hong, Koh Pak Bia, and Paradise Beach
11:45 am	lunch on beach or at Koh Yao Island Resort
1:00 pm	depart for Koh Nok
1:10 pm	arrive Koh Nok, enjoy the solitude of this deserted island beach
1:45 pm	depart Koh Nok
2:30 pm	arrive Boat Lagoon





Our Fleet



Sports Cruisers

These 31ft Sports Cruisers are manufactured by Chris Craft, the world's most established boat builder. Carrying a maximum of 12 passengers, they are perfect for a group of 8 passengers sitting in the forward open cabin area. With a top speed of 42 knots, our Sports Cruisers will get you where you want to go fast, so you've got more time to enjoy snorkeling, or soaking up the sun, on your favourite beach.

Safety

- GPS/Sounder/Chartplotter
- Fire extinguishers
- Life jackets & life ring
- VHF radio

Creature Comforts

- Bose stereo
- Toilet
- Fresh water shower

Basic Facts

- Chris Craft Scorpion
- 31 feet length
- Top speed 42 knots
- Cruising speed 30 knots
- Maximum 8 passengers
- 2 x 175hp Suzuki 4-stroke outboard engines





Red Hot

This 31ft Sports Cruiser is our second Chris Craft boat. She also carries a maximum of 12 passengers, and is perfect for a group of 8 passengers sitting in the forward open cabin area. With a top speed of 42 knots, Red Hot won't be easily missed as she speeds you to your island paradise.

Safety

- GPS/Sounder/Chartplotter
- Fire extinguishers
- Life jackets & life ring
- VHF radio

Creature Comforts

- Bose stereo
- Toilet
- Fresh water shower

Basic Facts

- Chris Craft Scorpion 313
- 31 feet length
- Top speed 42 knots
- Cruising speed 30 knots
- Maximum 8 passengers
- 2 X 200 hp Yamaha outboards





Semiramis

This beautifully crafted 29 ft wood and fiberglass vessel is modeled after the historical Chris Craft "gentlemen's cruisers" which ply the lakes of Lake Tahoe and New England. She seats four comfortably in an open uncovered cabin, and is powered by a quiet inboard diesel engine. Semiramis is recommended to sun seekers for elegant, fair weather half day cruises, to either Phang Nga Bay or Koh Hong Krabi.

Safety

- GPS/deep sounder
- Life jackets/life ring/flares/first aid kit
- VHF radio

Creature Comforts

- Stereo/CD player
- Snorkeling equipment
- Deck shower
- 2 toilets

Basic Facts

- 29 ft length
- Hardwood and fiberglass construction
- Single engine inboard diesel
- Maximum 5 Passengers





38 Special

The Baja 38 Special, an excellent example of a “go fast” speedboat from the Miami “poker run” scene, is perfect for thrilling rides to Phi Phi or Krabi. She is powered by twin diesels producing 630 hp of raw power. Both the sight, and sound of this yacht, are bound to turn heads as she cruises out of the marina. Her uncovered, open cabin accommodates 4 passengers, and with 38 feet of length, she is relatively comfortable in medium to large seas, and cruises comfortably at 40 knots.

Safety

- Life jackets
- GPS/depth/sounder

Creature Comforts

- 2 berth sleeping cabin
- Toilet inside cabin
- Fresh water shower
- Full snorkeling equipment

Basic Facts

- Baja 38 Special
- 38 ft length
- 2 X 315 hp Yanmar diesels
- Maximum 4 pax
- Maximum speed 50 knots





Sunseeker Portofino 53

Newly manufactured by Britain's leading boat builder, this Sunseeker Portofino 53 is excellent for both first class day trips, or short overnight trips for 2- 3 couples, to Phi Phi, or Krabi. With a cruising speed of 25 knots, she is also well suited for day trips, comfortably covering up to 100 kilometers and more per day. Her main deck features a large shaded, semi-circular seating and dining area. Large sunbeds both fore and aft are well suited to sunbathing while the boat is underway.

Safety

- Radar/GPS/chart plotter/sonder
- Life jackets
- VHF radio

Creature Comforts

- Home entertainment with 4 flat panel displays in cabins
- DVD/stereo
- Fully air-conditioned
- Luxuriously fitted

Basic Facts

- 53 feet length
- 12 feet beam
- Top speed 34 knots
- Cruising speed 25 knots
- 2 X 710 hp Caterpillar diesels
- Jet powered tender





Manhattan 50

The Sunseeker Manhattan 50 is a fine sample of superior British craftsmanship that makes her perhaps the most popular premium charter brand in the Med. This yacht is very well suited to cruising in Phuket. The covered flybridge provides a 360 degree of view of Phuket's island scenery while the enclosed main deck cabin provides air conditioned shelter from the elements. The Manhattan 50 sleeps 6 adults comfortably, which makes her ideal for 2 – 3 day overnight cruises, or for up to 8 guests for a single day charter.

Safety

- Radar/GPS/Chart Plotter/Depth Sounder
- Life jackets
- VHF/SSB radio

Creature Comforts

- Fully Air conditioned
- TV/DVD/Stereo
- Dinghy
- Snorkelling equipment

Basic Facts

- 50 ft length
- 12 ft beam
- Large flybridge
- 20-25 knots cruising speed
- Maximum passengers
 - 8 day trip
 - 6 overnight trip





Cranchi 41



Princess 42

40+ft. Sport Yachts

The 40+ft range sports yachts are becoming increasingly popular for their outstanding comfort, agility and affordability. In this range we feature currently a British built 42ft Princess and a yacht from Italy, the 41ft Cranchi.

These yachts can compete in speed with smaller speedboats but provide the comfort of a much larger yacht, including air-conditioned salon, proper bathrooms and plenty of space to move around. The roofs are retractable and provide this open air feeling while cruising the spectacular Andaman sea.

Safety

- GPS/Chartplotter
- Fire extinguishers
- Life jackets & life ring
- VHF radio

Creature Comforts

- Full interior air-conditioning
- 2 Bathroom
- DVD/TV/Stereo
- 2 cabins sleeping 4 guests

Basic Facts

- 41 - 44 ft length
- 13 ft beam
- 25 knots cruising speed
- Maximum passengers
 - 8 day trip
 - 4 overnight trip





Cranchi 47

This is a fine Italian built sports yacht with high class fittings and equipment. The perfect day cruiser with a top speed of 35 knots and a cruising speed of 27 knots. It's well appointed cockpit hosts a large refrigerator, a BBQ station and comfortable seating for up to 8 passengers in style. The salon and the cabins are fully air-conditioned and equipped with the latest entertainment electronics such as TV plus DVD and a high quality stereo system. The sun beds at the bow are inclining and have a sunshade for themselves. Guests on board will appreciate the bow lounge with it's own cooler to have cold drinks handy anytime they wish.

Safety

- Radar/GPS/Chart Plotter/Depth Sounder
- Life Jackets
- VHF/SSB radio

Creature Comforts

- Fully Air conditioned salon & cabins
- TV/DVD/Stereo
- Ice maker
- Dinghy
- Snorkelling equipment

Basic Facts

- 47 ft length
- 13 ft beam
- 25-30 knots cruising speed
- Maximum passengers
 - 8 day trip
 - 4 overnight trip





Ferretti 680

Ferretti 680 is simply, the most luxurious charter vessel on offer in Phuket. Exquisite Italian design & workmanship are evident throughout this late model Ferretti 680. At 21 m of length, she is totally stable in big seas, but with a cruising speed of greater than 25 knots, she's fast enough to cover serious ground, making her great for day trips to Phi Phi or Krabi.

Safety

- GPS/Radar/Depth
- Satellite/VHF Communications/EPIRB
- Full life jackets and first aid kits

Creature Comforts

- Air conditioned
- Plasma/Bose stereo/DVD/ 2 X LCD TV's
- Satellite TV receiver
- Jet ski
- Scuba tank compressor/ tanks/BCD's/regulators

Basic Facts

- Ferretti 680
- Launched 2004
- 68 ft length
- 3 cabins, sleeping 6 passengers
- Tender
- Top speed 33 knots
- Maximum Passengers - 12 day trip - 6 overnight
- Cruising speed 25 knots
- 2 X 1,200 hp MAN diesels
- Fully crewed with hostess





Leylai

Leylai is 76 ft Italian built Luxury Cruiser. Built in the Genoa yards of Spertini Alalunga, Leylai makes an extreme statement in luxury. Whether it's a day trip to Phi Phi, or an extended overnight charter to the Similans, Leylai will bring you there in complete comfort and style. Featured in the movie Taipan, and now featured by Limestone Adventures Cruises, for your holiday enjoyment.

Safety

- GPS/Sounder/Chartplotter
- Fire extinguishers
- Life jackets & life ring
- VHF radio/EPIRB
- Radar

Creature Comforts

- Home entertainment system
- Fully air-conditioned
- Jet skis
- Others, too many to list

Basic Facts

- 76 feet length
- 3 Cabins
 - 1 kingsize berth with private ensuite bathroom
 - 1 double berth with ensuite bathroom
 - 1 twin berth with ensuite bathroom
- Maximum Passengers
 - 15 day trip
 - 6 overnight
- Top speed 22 knots
- Cruising speed 12 knots
- 2 X 725 hp Detroit Diesel turbos
- Fully crewed including hostess
- Tender





Osu

Osu is a late model 48 ft Riviera Flybridge. She has a cruising speed of 18-20 knots, and is fully fitted for diving, and for sport fishing. Osu accommodates up to 6 passengers on overnight trips. A fully air-conditioned saloon provides full shelter from the elements. A large sunbed towards the bow is ideally suited for sun seekers, while extensive shaded benches and table upstairs on the fly bridge provide comfortable social areas, and an excellent vantage to enjoy the view as it unfolds around you.

Safety

- GPS/Sounder/Chartplotter
- Fire extinguishers
- Life jackets & life ring
- VHF radio/EPIRB
- Radar

Creature Comforts

- Full interior air-conditioning
- Cherry wood interior, navy blue Berber carpeting, and leather sofas
- Fully equipped for fishing

Basic Facts

- 48 ft length
- 14 ft beam
- 18-20 knots cruising speed
- 28-30 knots top speed
- 2 X 660 Caterpillar Diesels
- Maximum Passengers
 - 10 Day Trip
 - 6 Overnight Trip





Althea

Althea is a 44ft Fountaine Pajot Cumberland motor catamaran. She cruises at up to 20 knots and can take guests on a daytrip covering the entire Phang Nga, Koh Hong Krabi and Phi Phi regions. A large bimini covered flybridge makes her excellent for day charters, but she shines the most as an overnight charter vessel. With a cruising speed of 20 knots she covers much more distance than sailing yachts, while her wide catamaran hull creates expansive deck and living areas and give her big yacht spaciousness but without the accompanying big yacht price.

Safety

- Radar/GPS/Chart Plotter/Depth Sounder
- Life Jackets
- VHF/SSB radio

Creature Comforts

- Fully Air conditioned
- Stereo system
- Dinghy w. 15hp. outboard
- Fishing & snorkeling equipment

Basic Facts

- 44 ft length
- 21.5 ft beam
- Large flybridge
- 18-20 knots cruising speed
- Maximum passengers
 - 12 day trip
 - 6 overnight trip



Sports Cruiser Charters (Bt Incl. VAT)

Destination	Depart	Return	OFF-PEAK	PEAK
From Boat Lagoon				
Phang Nga Bay	9:00 am	1:00 pm	28,000	35,000
Phang Nga Bay	2:00 pm	6:00 pm	28,000	35,000
Koh Khai Sunset	3:30 pm	7:45 pm	19,000	24,500
Koh Hong Krabi	9:30 am	2:30 pm	30,000	n/a
Koh Hong Krabi & Phang Nga Bay	9:30 am	5:30 pm	35,000	45,000
Phi Phi	9:30 am	5:30 pm	35,000	45,000
Railay Beach Krabi	9:30 am	5:30 pm	35,000	45,000
Round Island	9:30 am	5:30 pm	35,000	45,000
Phi Phi & Krabi	9:00 am	5:30 pm	41,000	53,000
Phi Phi, Krabi & Phang Nga Bay	8:30 am	5:30 pm	44,000	55,000
Racha Fishing Trip	9:30 am	5:30 pm	40,000	49,000
Similans	8:00 am	5:30 pm	54,000	63,000

PEAK : December 20 - January 31

OFF-PEAK : November 1 - December 19 & February 1- October 31

Semiramis Charters (Bt Incl. VAT)

Destination	Depart	Return	Price
Koh Khai 2.5 Hours	3:30 am	7:45 pm	28,000
Phang Nga Bay	9:00 am	1:00 pm	40,000
Phang Nga Bay	2:00 pm	6:00 pm	40,000
Koh Hong Krabi	9:30 am	2:30 pm	43,000
Koh Hong Krabi & Phang Nga Bay	9:30 am	5:30 pm	50,000
Phi Phi	9:30 am	5:30 pm	50,000
Railay Beach Krabi	9:30 am	5:30 pm	50,000



38 Special Charters (Bt Incl. VAT)

Destination	Depart	Return	Price
Koh Khai 2.5 Hours	3:30 am	7:45 pm	35,000
Phang Nga Bay Half Day	11:30 am	3:30 pm	45,000
Koh Hong Krabi	9:30 am	2:30 pm	45,000
Koh Hong Krabi & Phang Nga Bay	9:30 am	5:30 pm	59,000
Phi Phi	9:30 am	5:30 pm	59,000
Railay Beach Krabi	9:30 am	5:30 pm	59,000

Sunseeker Portofino 53 Charters (Bt Incl. VAT)

Destination	Depart	Return	Price
Phang Nga Bay	11:30 am	4:30 pm	125,000
Ko Hong Krabi	10:30 am	4:30 pm	140,000
Koh Hong Krabi & Phang Nga Bay	8:30 am	5:30 pm	198,000
Phi Phi	8:30 am	5:30 pm	198,000
Railay Beach Krabi	8:30 am	5:30 pm	198,000

Manhattan 50 Charters (Bt Incl. VAT)

Destination	Depart	Return	Price
Phang Nga Bay	11:30 am	4:30 pm	165,000
Ko Hong Krabi	10:30 am	4:30 pm	185,000
Koh Hong Krabi & Phang Nga Bay	8:30 am	5:30 pm	255,000
Phi Phi	8:30 am	5:30 pm	255,000
Railay Beach Krabi	8:30 am	5:30 pm	255,000
2 days / 1 night			415,000

Ferretti 680 Charters (Bt Incl. VAT)

Destination	Depart	Return	Price
Phang Nga Bay	11:30 am	3:30 pm	160,000
Koh Hong Krabi & Phang Nga Bay	10:30 am	4:30 pm	210,000
Phi Phi	8:30 am	6:30 pm	315,000
Railay Beach Krabi	8:30 am	6:30 pm	315,000
2 days / 1 night			535,000



Cranchi 41

Destination	Depart	Return	Price
Phang Nga Bay	10:30 am	3:30 pm	66,000
Koh Hong Krabi & Phang Nga Bay	9:30 am	5:30 pm	93,000
Phi Phi	9:30 am	5:30 pm	93,000
Railay Beach Krabi	9:30 am	5:30 pm	93,000



Princess 42

Destination	Depart	Return	Price
Phang Nga Bay	10:30 am	3:30 pm	82,000
Koh Hong Krabi & Phang Nga Bay	9:30 am	5:30 pm	115,000
Phi Phi	9:30 am	5:30 pm	115,000
Railay Beach Krabi	9:30 am	5:30 pm	115,000



Cranchi 47

Destination	Depart	Return	Price
Koh Hong Krabi & Phang Nga Bay	10:30 am	4:30 pm	130,000
Phi Phi	9:30 am	5:30 pm	130,000
Railay Beach Krabi	9:30 am	5:30 pm	130,000
2 days/ 1 night			240,000



Leylai Charters (Bt Incl. VAT)

Destination	Depart	Return	Price
From Yacht Haven			
Naka	10:30 am	2:30 pm	120,000
Phang Nga Bay	10:30 am	4:30 pm	140,000
Koh Hong Krabi	9:30 am	5:30 pm	165,000
Koh Hong Krabi & Phang Nga Bay	9:00 am	6:00 pm	185,000
From West Coast			
West Coast Beaches	10:30 am	4:30 pm	140,000
Koh Racha	9:00 am	6:00 pm	170,000
Laem Singh	10:30 am	2:30 pm	95,000
2 days/ 1 night			310,000



Althea Charters (Bt Incl. VAT)

Destination	Depart	Return	Summer	Winter
Phang Nga Bay	11:30 am	4:30 pm	65,000	75,000
Koh Hong Krabi	10:30 am	4:30 pm	70,000	80,000
Koh Hong Krabi & Phang Nga Bay	9:30 am	5:30 pm	88,000	98,000
Phi Phi	9:30 am	5:30 pm	90,000	103,000
Railay Beach Krabi	9:30 am	5:30 pm	90,000	103,000
2 days / 1 night			150,000	180,000
Althea from Dec 22 - Jan 8, peak season surcharge+10%				

Winter : November 01 - April 15 / Summer : April 16 - October 31



Osu Charters (Bt Incl. VAT)

Destination	Depart	Return	Summer	Winter
Phang Nga Bay	11:30 am	4:30 pm	75,000	88,000
Koh Hong Krabi	9:30 am	5:30 pm	85,000	95,000
Koh Hong Krabi & Phang Nga Bay	9:30 am	5:30 pm	105,000	115,000
Phi Phi	9:30 am	5:30 pm	105,000	115,000
Railay Beach Krabi	9:30 am	5:30 pm	105,000	115,000
2 days / 1 night			160,000	190,000

Winter : November 01 - April 15 / Summer : April 16 - October 31



Terms and Conditions

- Departure times are flexible upon request, and subject to availability. Departures and return times subject to change due to tides
- Includes Lunch, Non-Alcoholic Beverages, Beach Towel, and Ground Transfers. Excludes National Park fees
- Koh Khai Sunset includes seafood dinner at floating restaurant. Boat drops off at floating restaurant and guests return to pier via longtail
- Prices are valid through 31st October 2009
- Cruise may be cancelled with full refund in the event of foul weather