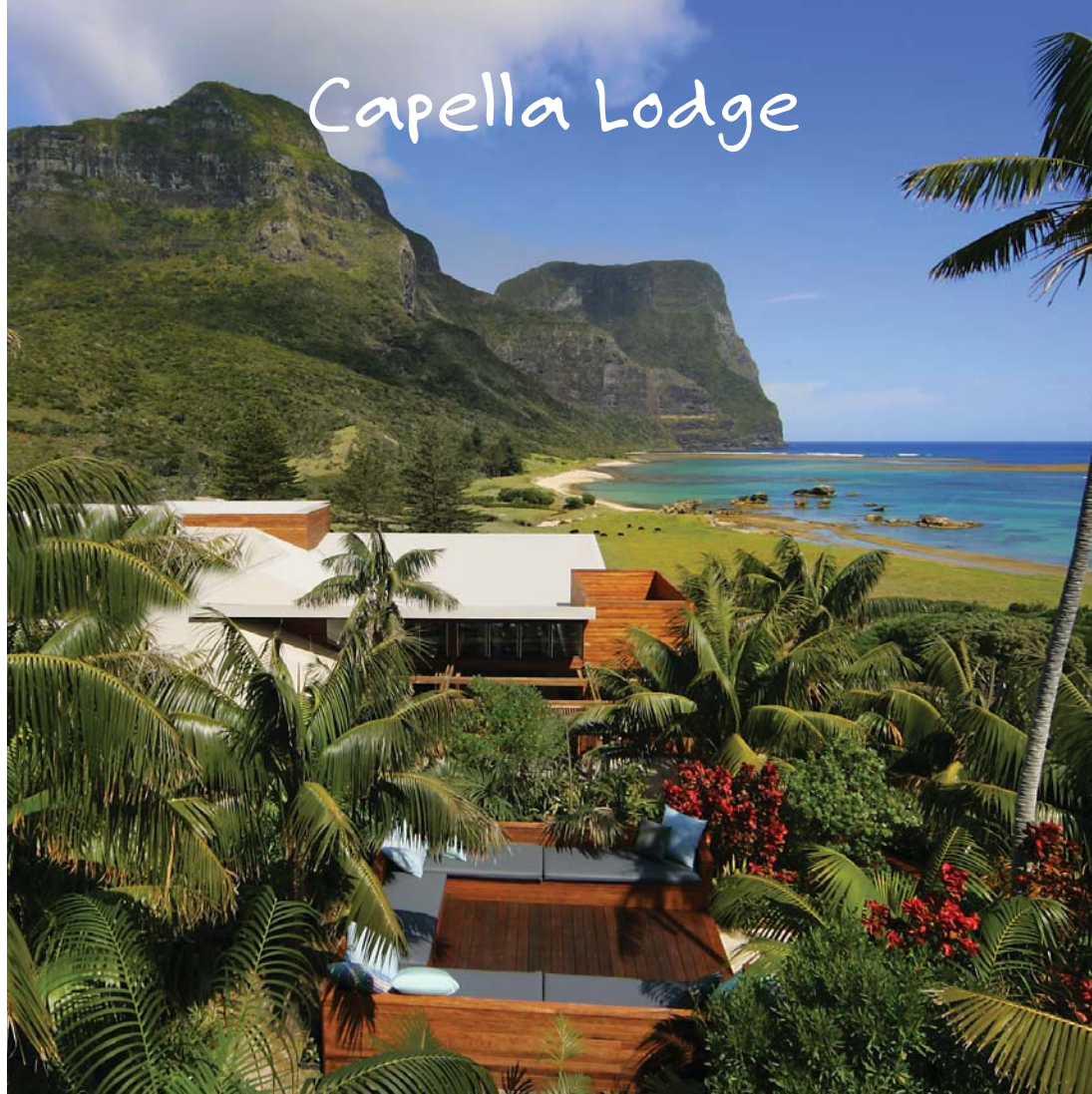


Capella Lodge





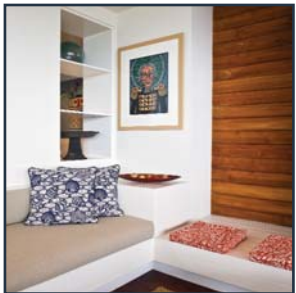
The last paradise

Lord Howe is a sub-tropical 'treasure island' lost in time, a natural sanctuary of rugged volcanic peaks and basalt outcrops, hidden valleys awash with rare plants in shades of emerald, cloud forests, opalescent sands and serene turquoise lagoons.

The island is encircled by the world's southern-most coral reef, which provides home to a kaleidoscope of abundant coral and fish. It was inscribed on the UNESCO World Heritage List in 1982 as a place of rare and unique beauty, rich in natural heritage.

A limited few enjoy this island paradise; only four hundred guests at a time are permitted on the island with the aim to preserve this precious natural treasure.





Lodge

Celebrated as the pinnacle of luxury on Lord Howe, Capella Lodge rests atop romantic Lovers Bay, and at the foot of the imperious mountain twins rising dramatically above, Mts Gower and Lidgbird. Spectacular views of the ocean, reef and mountains are welcomed into the Lodge. Contemporary architectural design presents generous indoor-outdoor lounging areas and floor to ceiling glass that opens beneath a dramatic skillion roof reaching to the peaks beyond.

A feeling of relaxed sophistication flows throughout the Lodge as recycled wooden floors, beach-house chic furnishings and Lord Howe style custom fabrics complement the convivial ambience of Capella's bar, lounges and restaurant. Luxurious surrounds, exceptional island-inspired dining and unforgettable 'first-name' service combine to create an outstanding lodging experience. Capella Lodge sets world-class standards of exclusive luxury on Lord Howe.



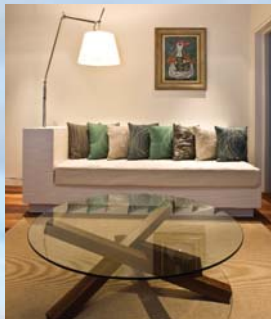


Food & Wine

Capella revels in its reputation for fine dining, Lord Howe style. The Lodge Restaurant opens to spectacular views of the ocean, reef and mountains, providing a dramatic backdrop for savouring fresh island cuisine. Inspired daily changing menus showcase a bounty of seafood, fresh from the

surrounding pristine waters, locally sourced and often organic ingredients accompanied by lodge-made specialities. Capella Lodge dining is at once boldly simple and cleverly sophisticated, designed to bring out the best in superb island produce and fresh regional flavours.



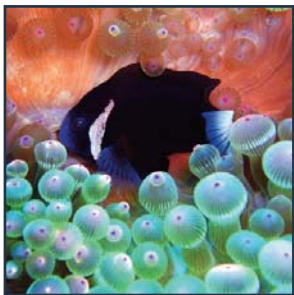


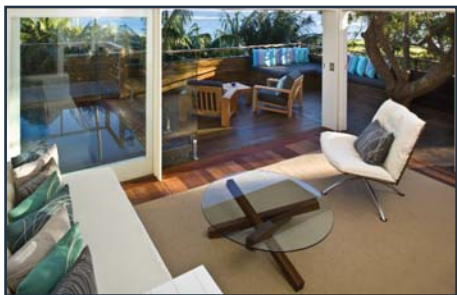


Experience

An abundance of rare birds, plants and marine life combine to make Lord Howe Island a remarkable destination. With Capella as a luxe base camp, take to rainforest walking tracks and explore remote rocky coves alive with magnificent birdlife or valleys brimming with ancient plants. Climb to the summit of Mt Gower, rated as one of the world's best day walks or comb for shells on pristine white-sanded beaches.

The clear, warm Lord Howe waters are ablaze with colour. Soft and hard corals, sea turtles and a riot of fish inhabit intriguing submarine cities sheltered within the reef. Kingfish, tuna and marlin cruise beyond. Take nothing but fins and snorkel or glass-bottomed boat, or dive deeper to explore the underwater world.



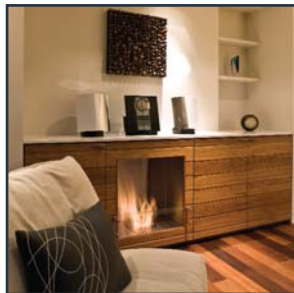
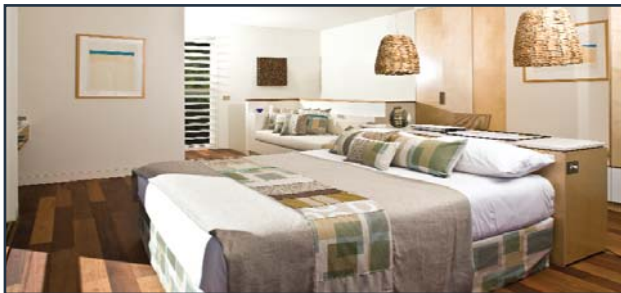


Stay

Capella has an intimate nine contemporary island-style suites designed to complement Lord Howe's pristine natural environment and provide a luxurious, serene refuge. Inspired by the carefree spirit of the authentic Australian beach house, this is barefoot luxury at its best.

Stay in the open, single level Capella Suite, the dual level Lagoon and Makambo Lofts with show-stopping views from the upper level, or in the ultimate Lidgbird Pavilion with wrap-around Lord Howe views and private plunge pool.

Spacious, light-filled interiors feature lavishly appointed king beds, bespoke furnishings and commissioned artworks that create a sense of relaxed, understated luxury. Refresh in chic basalt stone ensuite bathrooms. Generous private decks take in views of ocean and mountains under the sway of Lord Howe's endemic Kentia palms and welcome the outside in.





Spa

Take time to indulge, unwind and revitalize in the petite Capella Spa. A menu of signature spa treatments is inspired by Australia's indigenous Dreamtime and uses the Li'tya spa care range to sooth and nourish.

Treatments are created to combine the precious regenerating qualities of the Australian earth, sea and spirit with the wisdom and techniques of ancient Aboriginal medicines.

Choose a treatment that meets the mood, from a refreshing 'Capella Signature Massage' to the indulgent three-hour 'Dreaming'. 'Sacred Stone Therapy' draws upon the radiant power of warmed basalt stones gathered from the island's windward beaches.





Getting there

Lord Howe is situated in the South Pacific Ocean, 700km north-east of Sydney, Australia.

Access is exclusively via a short Qantas flight which departs daily and provides a spectacular aerial welcome to this island sanctuary.



Capella Lodge

Lord Howe Island

Baillie Lodges Sales & Reservations: PO Box 596, Avalon NSW 2107 T 61 2 9918 4355 F 61 2 9918 4381
E reserve@baillielodges.com.au W capellalodge.com.au